

Advanced Resource Planning



It sometimes takes **more than a machine** to produce an order.

Planning must integrate **all relevant resources.**



Motivation

"We need **tools** and other **equipment** besides our machines to manufacture our products. These resources should be accounted for in the planning process."

"Material is **critical** in our production. During planning, this must be considered."

"Our manufacturing processes are **energy-intensive**, so we have to keep a close eye on the energy quota available to us. Failing that, it costs a lot of money."



Your Issue



- Increase transparency of your planning.
- Integrate all required resources into the planning:
 - Tools
 - Material
 - Energy
- Reduce resource conflicts.



Our Solution

With the mApps of the FEDRA category Advanced Resource Planning, you can...

- ... integrate tools and other equipment into planning.
- ... identify resource conflicts at a glance.
- ... consider indirect dependencies and material relationships in planning.
- ... calculate future material stocks based on current planning.
- ... plan energy demand and supply.
- ... avoid peak loads and penalties.



APS FEDRA



Energy Demand
Planning

Predictive Material
Planning

Secondary
Resource Planning

mAPPS

Advanced Resource
Planning mApps



Increase planning reliability

Integrate all required resources

Save energy costs

Less penalties because of peak loads

Reduce waiting times

Early material availability check

Keep an eye on everything

Multidimensional planning incl. synchronization



Your Benefits

Use **APS FEDRA** Advanced Resource Planning to integrate production resources and tools as well as material and energy into your planning.



Profit Now!

A photograph of a modern industrial building complex. The main building is white with blue accents and multiple windows. A smaller building with a blue roof and large glass windows is on the right. The sky is blue with white clouds. A red line graphic runs across the bottom of the image, ending in a white circle.

About MPDV

WE CREATE SMART FACTORIES





**Market
leader**

for IT solutions in production



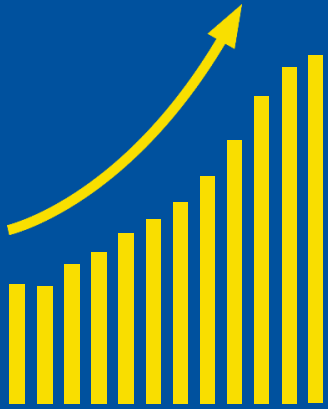
Over
45 years
project experience



We are at your side on the way to the Smart Factory

regardless of
your **size** and **industry**

Who are we?



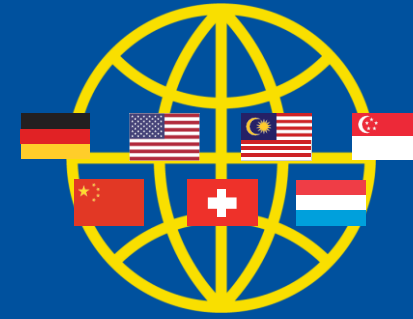
73 Mil

Euro group turnover



520

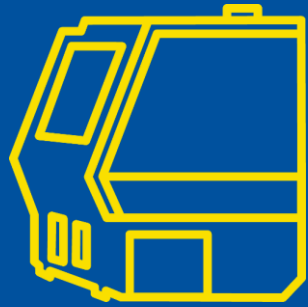
Employees



13

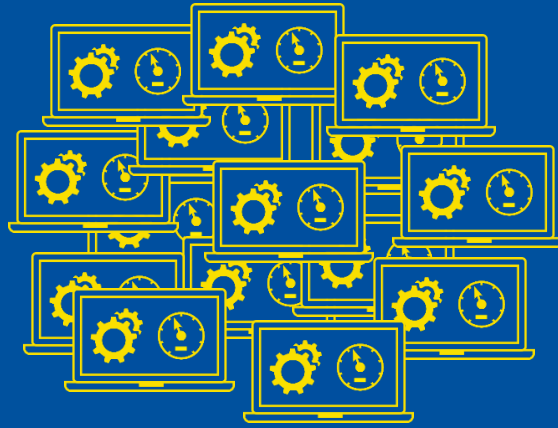
Locations worldwide

Basic Information



100,000

Machine connections
worldwide



1,100,000

People work with MPDV
systems every day



1,750

Installations

Basic Information

Would you like to learn more about APS FEDRA?



WE CREATE SMART FACTORIES



www.mpdv.com



info@mpdv.com



[+49 6261 9209 101](tel:+4962619209101)



Contact